

JORDAN SCOTT  
ART

# IDEAS ON COMPOSITION



jordandscott@sbcglobal.net  
www.jordanscottart.com  
773.206.2824

<http://www.jordanscottart.com/student-resources.html>

**Password: f8**

*“The single most important  
component of a camera is  
the twelve inches behind it.”*

*– Ansel Adams*



## IDEAS ON COMPOSITION

Consider Black & White to Emphasize  
Compositional Relationships and Contrasts



# IDEAS ON COMPOSITION

Learn to See in Black & White!



## IDEAS ON COMPOSITION

### The “Rule of Thirds”

While framing/composing your shot think of the four intersecting horizontal and vertical lines. Divide your composition using them and place your subject on one of lines, using the power points when appropriate. This is not a hard rule, but a good guideline to follow to get your subject out of center for more interesting and dramatic look.

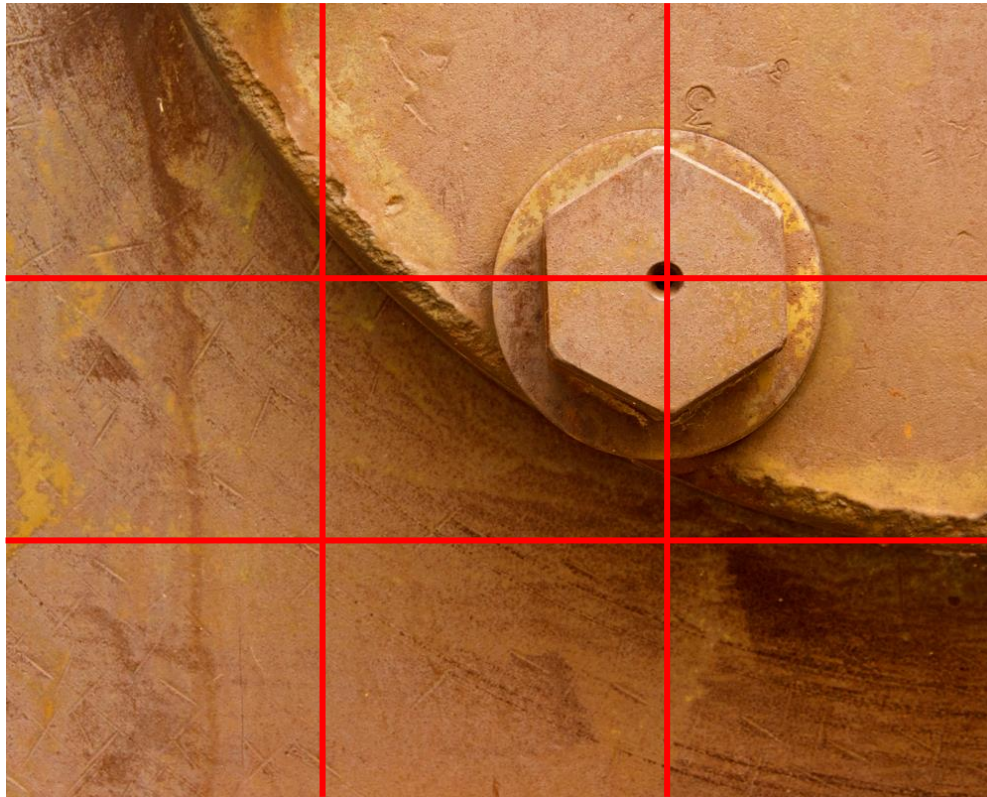
# IDEAS ON COMPOSITION

## The “Rule of Thirds”



# IDEAS ON COMPOSITION

## The “Rule of Thirds”





# IDEAS ON COMPOSITION

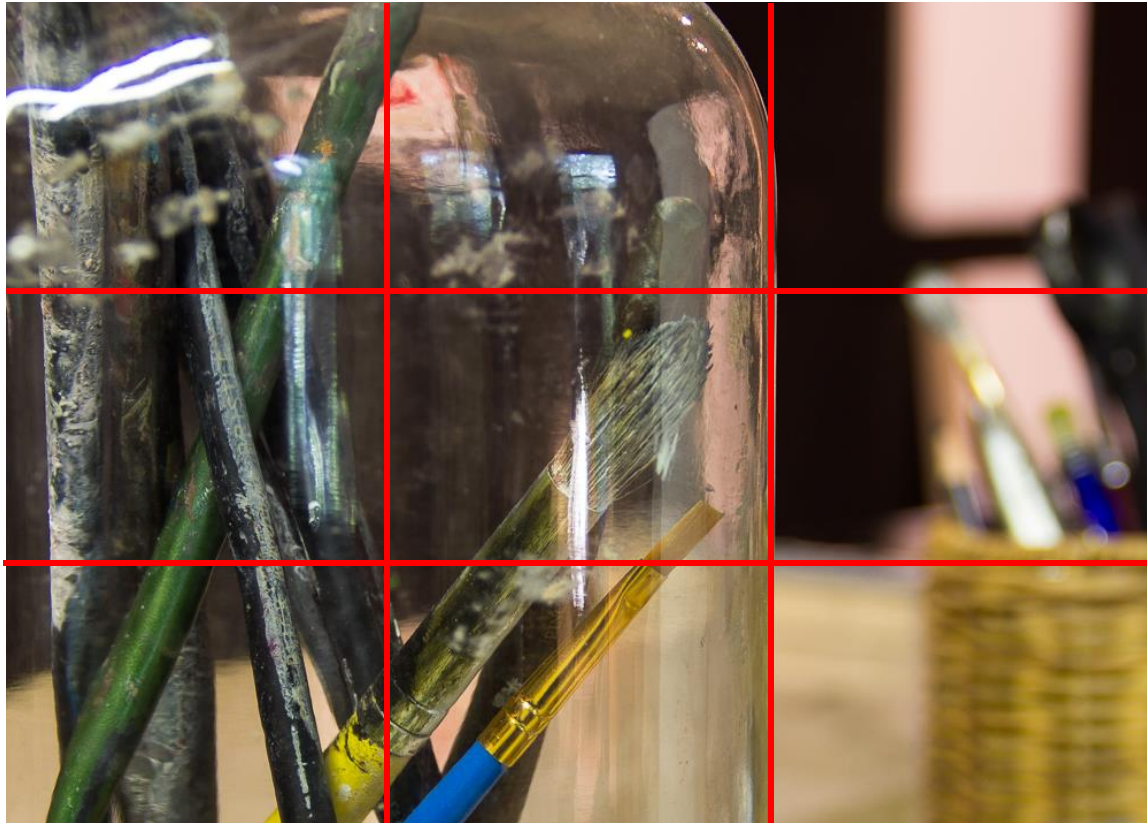
## The “Rule of Thirds”





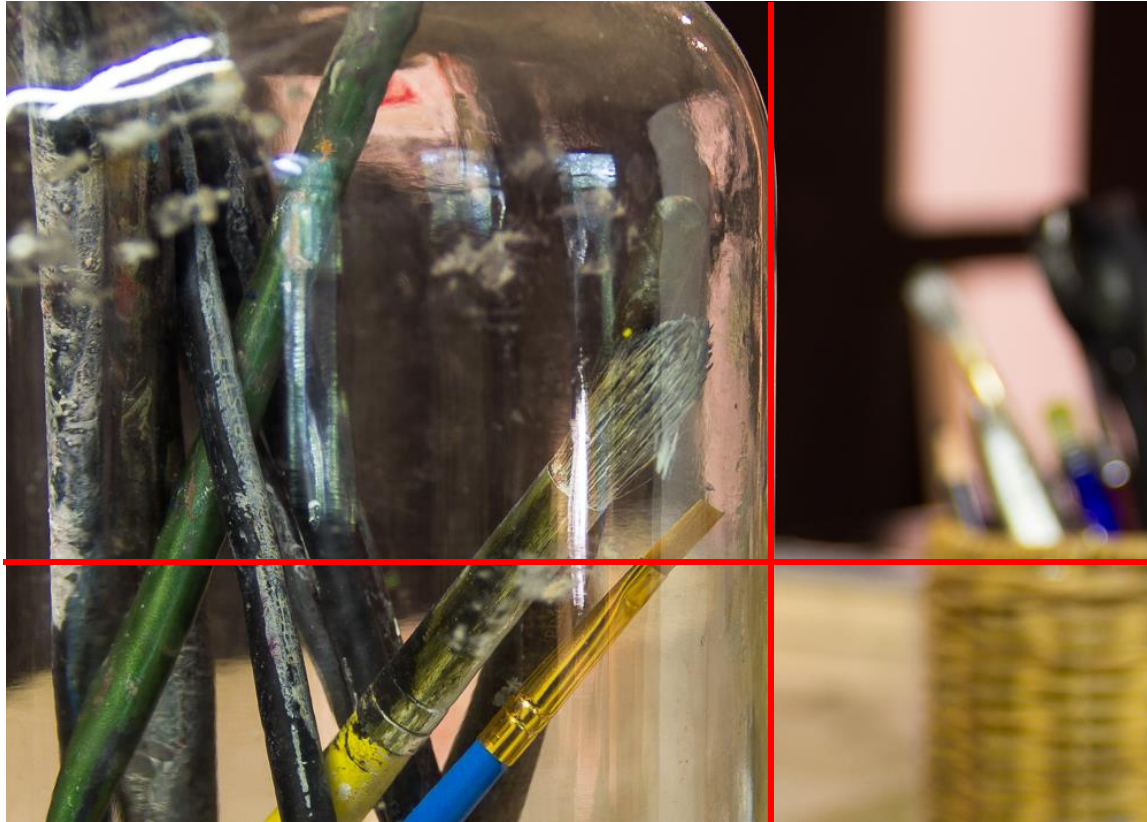
# IDEAS ON COMPOSITION

## The “Rule of Thirds”



# IDEAS ON COMPOSITION

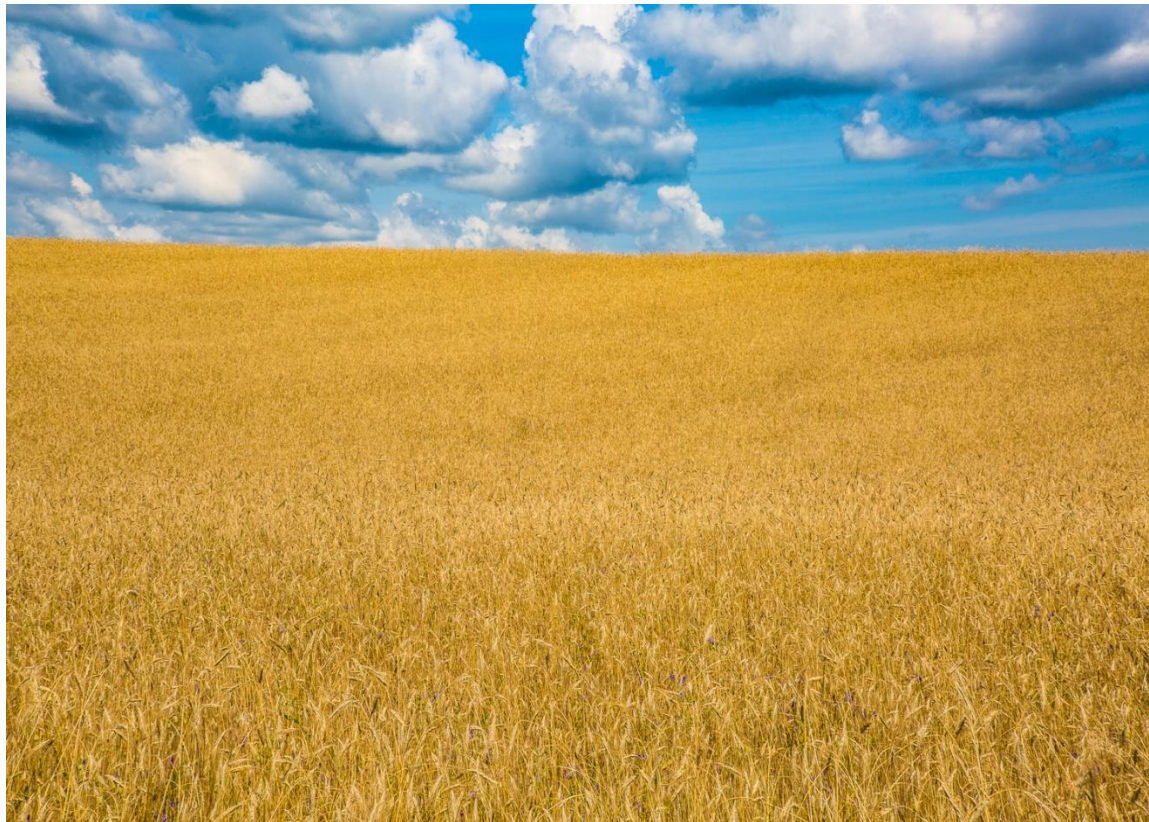
## The “Rule of Thirds”



# IDEAS ON COMPOSITION

## The “Rule of Thirds”

*IT DOESN'T HAVE TO BE A PERFECT ALIGNMENT TO WORK*

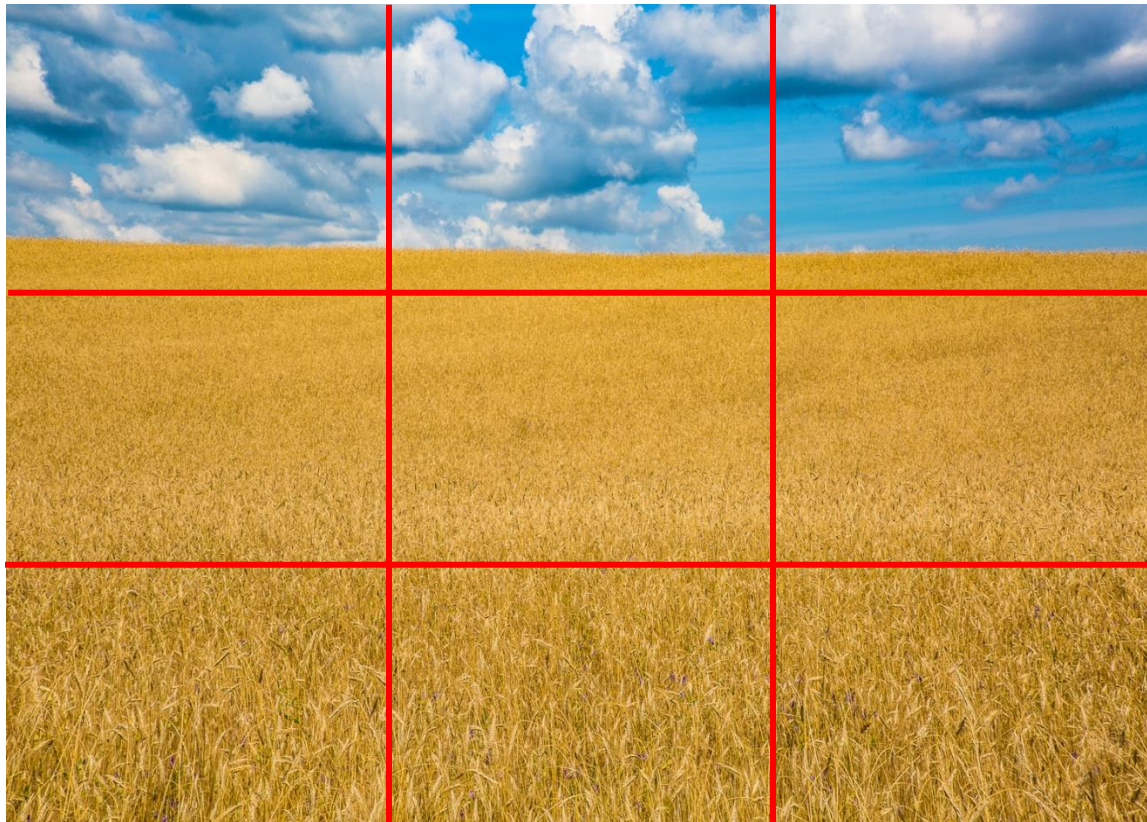




# IDEAS ON COMPOSITION

## The “Rule of Thirds”

*IT DOESN'T HAVE TO BE A PERFECT ALIGNMENT TO WORK*



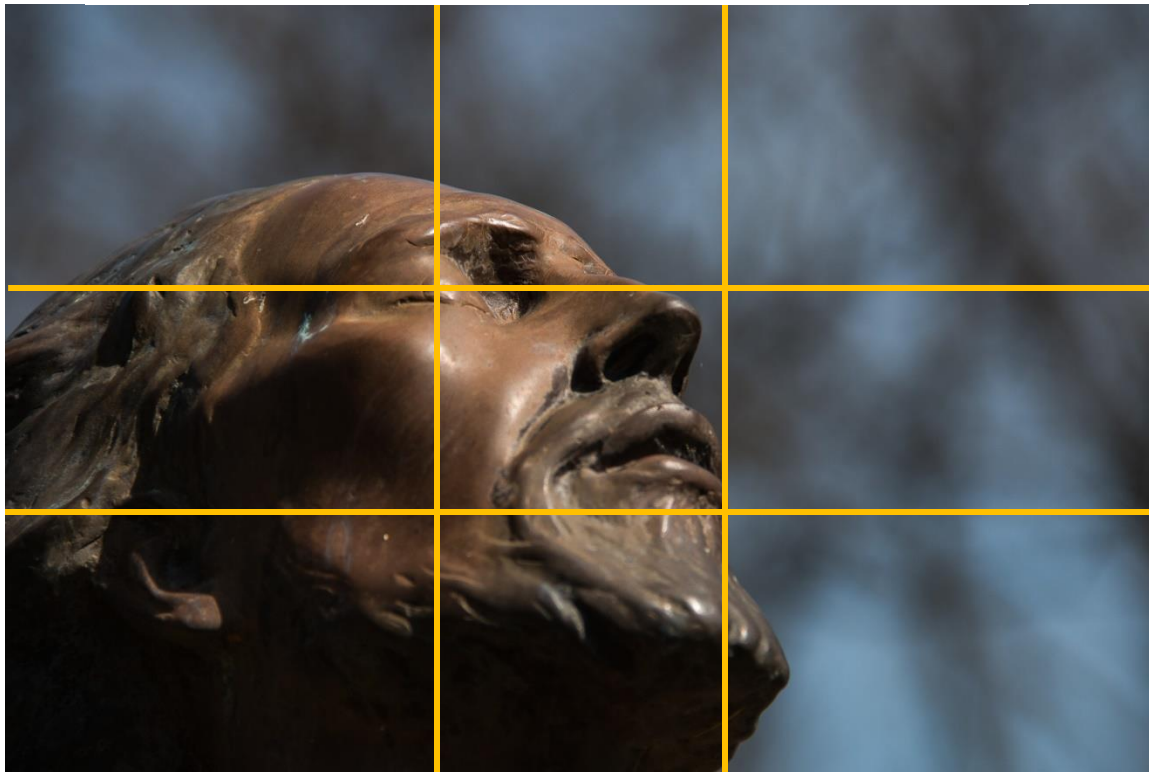
## IDEAS ON COMPOSITION

The “Rule of Thirds” variation  
The “Golden Ratio”



## IDEAS ON COMPOSITION

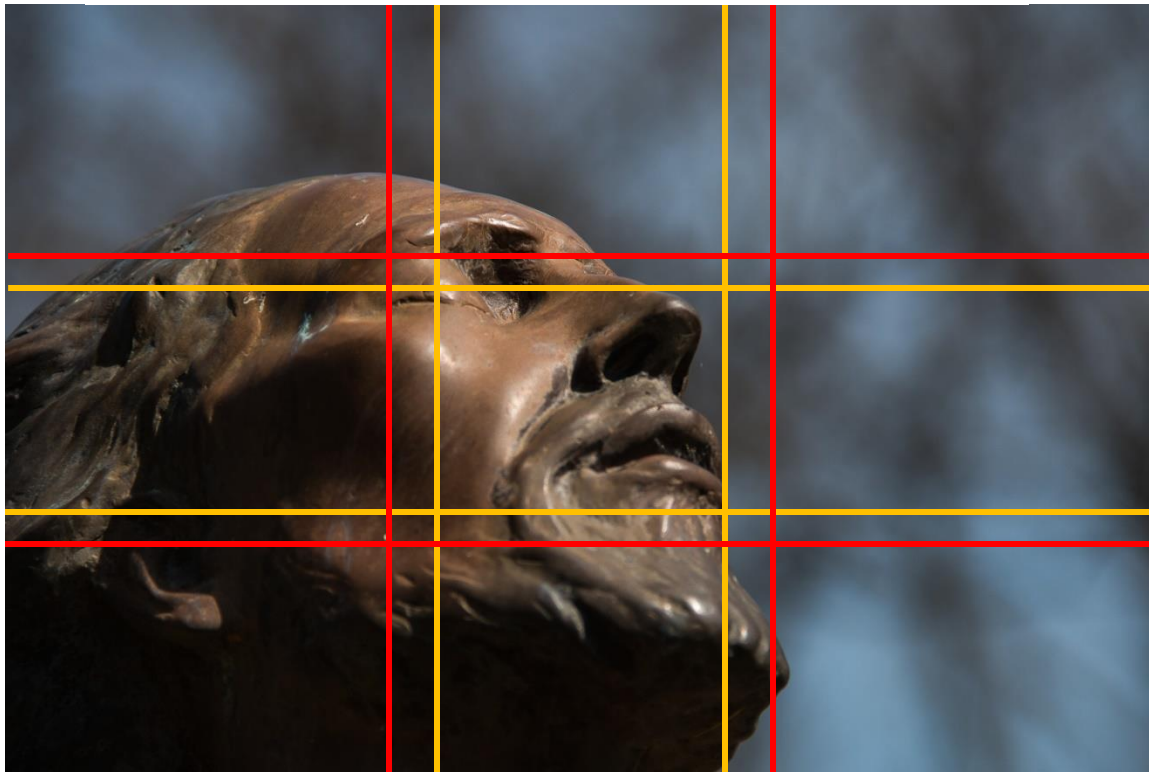
The “Rule of Thirds” variation  
The “Golden Ratio”





## IDEAS ON COMPOSITION

The “Rule of Thirds” variation  
The “Golden Ratio”



## IDEAS ON COMPOSITION

### Fill the Frame

When appropriate, don't leave too much space around your main subject. This deemphasizes the importance of your subject. Move in, or zoom in, closer.

# IDEAS ON COMPOSITION

Fill the Frame



# IDEAS ON COMPOSITION

## Fill the Frame



## IDEAS ON COMPOSITION

Make Use of “Leading Lines”

Lines in a scene can help control where the viewers eyes moves and lead them into the subject.

# IDEAS ON COMPOSITION

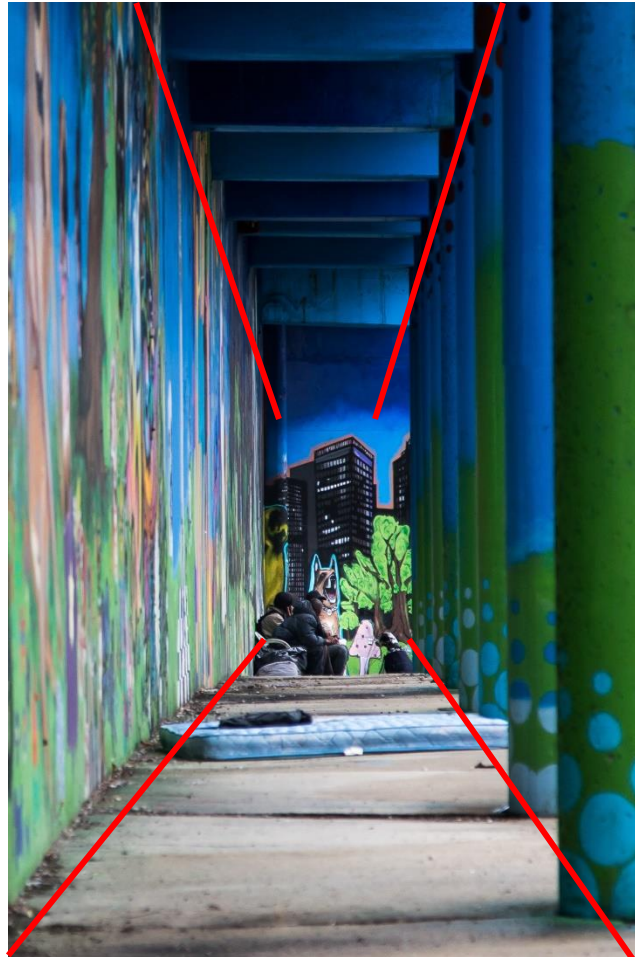
Make Use of “Leading Lines”





# IDEAS ON COMPOSITION

Make Use of “Leading Lines”



## IDEAS ON COMPOSITION

### Bad Lines and Distractions

Pay attention to the background and avoid bad lines that cut through the subject in an awkward way, or otherwise distract from the subject. Also, watch for distractions, or “eyes snags,” around the subject and edges of the composition.

# IDEAS ON COMPOSITION

## Bad Lines and Distractions



taken from Google images

## IDEAS ON COMPOSITION

Change Your Perspective

Don't just shoot from eyes level.  
Experiment with different heights, angles  
and perspectives.

# IDEAS ON COMPOSITION

Change Your Perspective



## IDEAS ON COMPOSITION

### Wide Aperture

**Use a wide aperture to make the subject pop.**

Open up the aperture, to blur background  
and/or foreground.

Keep the main subject in “*tack sharp*” focus.



## IDEAS ON COMPOSITION

Wide Aperture + Macro Telephoto Lens



## IDEAS ON COMPOSITION

Fill the Frame + Wide Aperture + Telephoto Lens



# IDEAS ON COMPOSITION

## Framing



# IDEAS ON COMPOSITION

## Framing + Rule of Thirds



# IDEAS ON COMPOSITION

## Symmetry





# IDEAS ON COMPOSITION

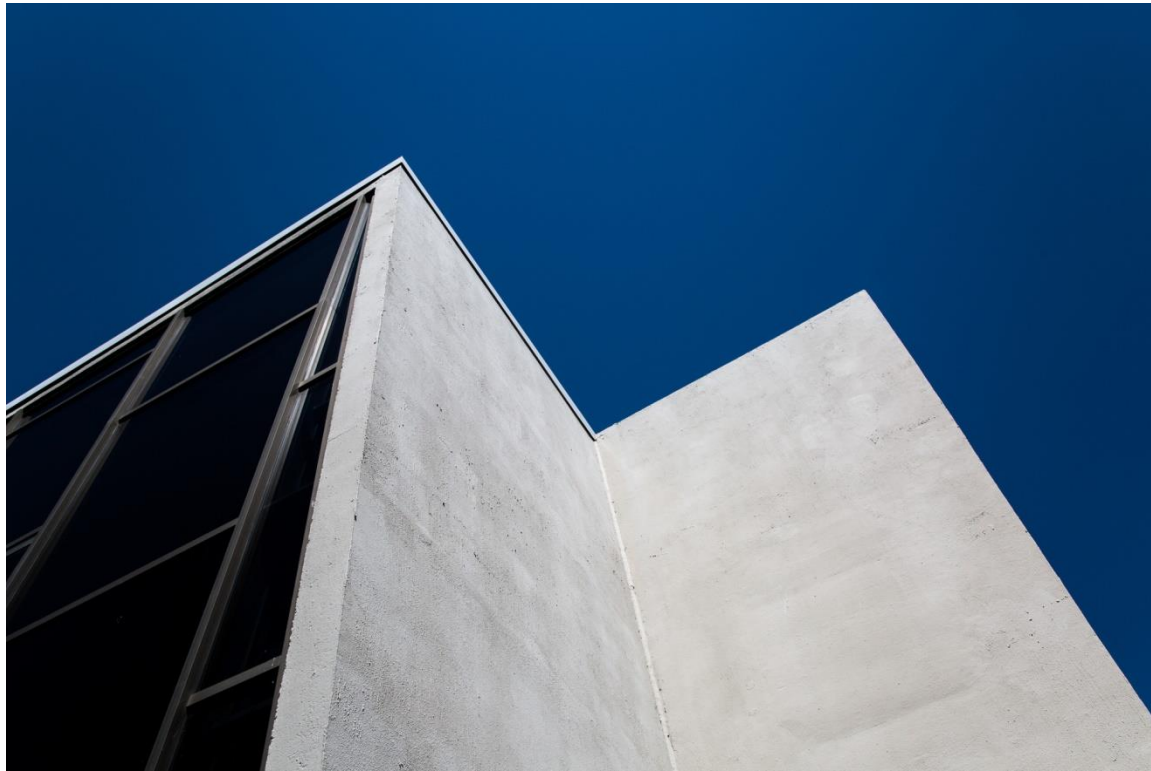
Symmetry + Black & White





# IDEAS ON COMPOSITION

## Diagonals



# IDEAS ON COMPOSITION

Converging Lines  
(with Symmetry + Black & White)



# IDEAS ON COMPOSITION

## Repetition and Pattern



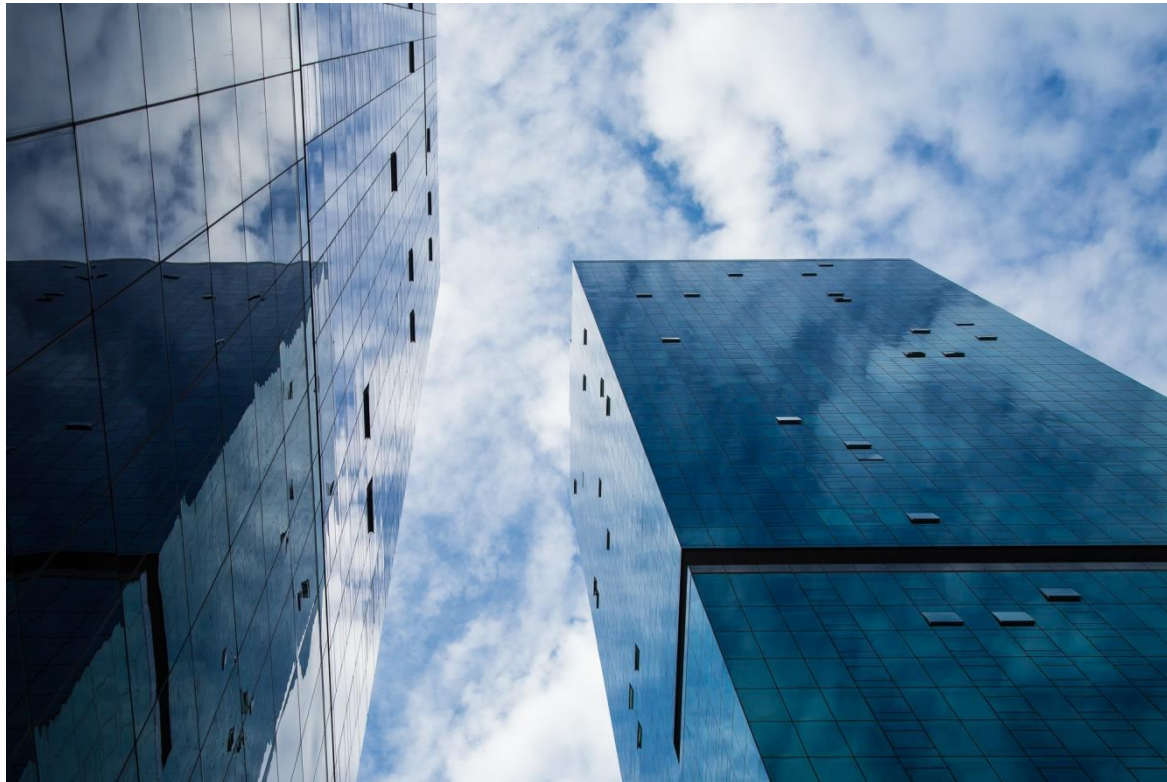
# IDEAS ON COMPOSITION

Repetition, Pattern & Texture



# IDEAS ON COMPOSITION

## Reflections and Shadows





# IDEAS ON COMPOSITION

Motion Blur to Create Original  
Compositional Element





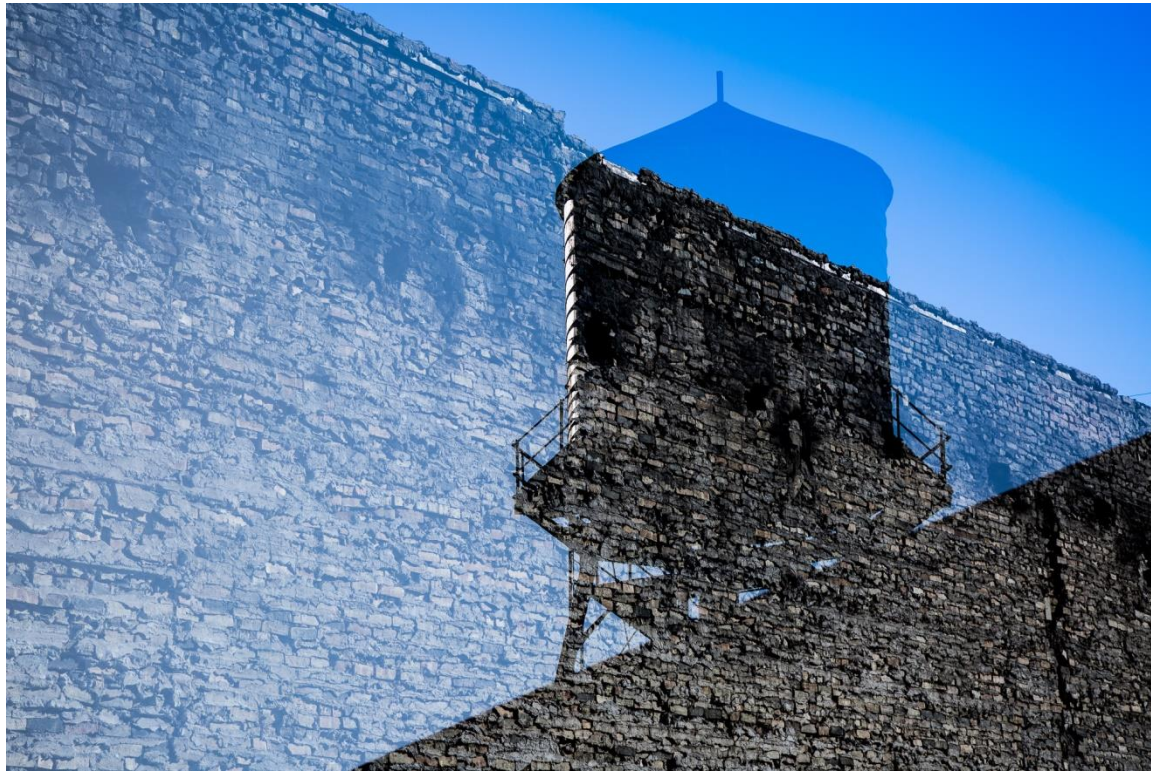
## IDEAS ON COMPOSITION

Change Format/Image Ratio



# IDEAS ON COMPOSITION

## Double/Multiple Exposures

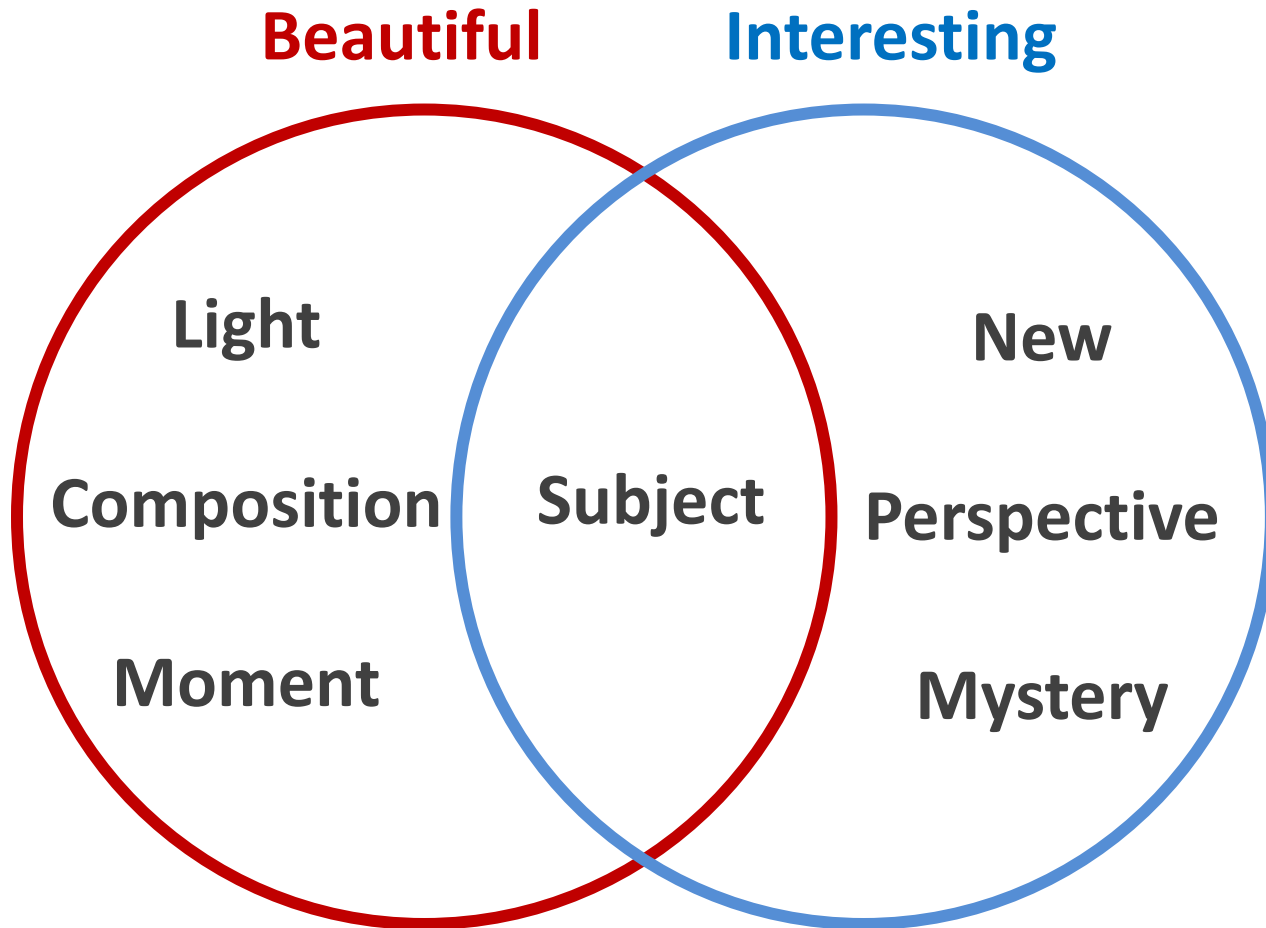


# IDEAS ON COMPOSITION

## Zoom Art



## A GREAT PHOTOGRAPH



*“The single most important  
component of a camera is  
the twelve inches behind it.”*

*– Ansel Adams*

